



# MONTHLY MEMBERSHIP PROGRESS REPORT

District 11 B1

Results as of: 01/31/2018

GMT: STEVE ANTON

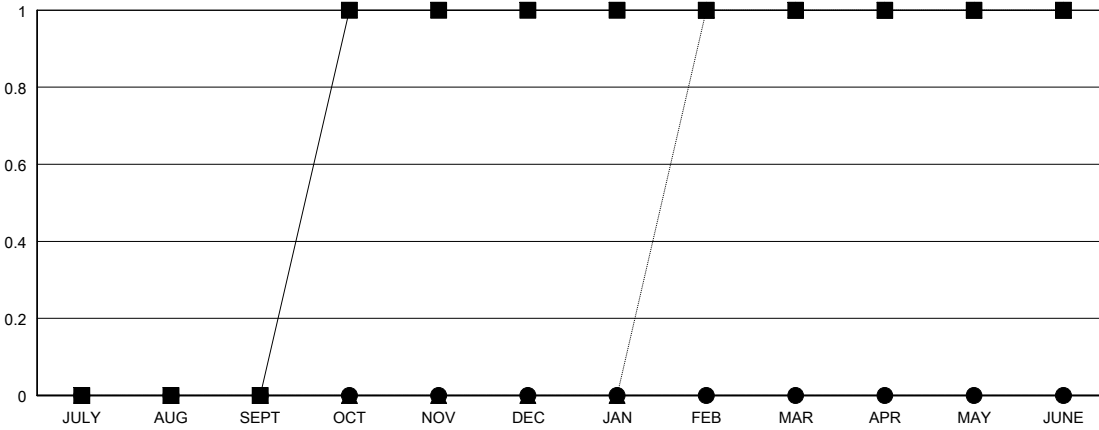
LOCATION MICHIGAN

GMT CA

Clubs			
RESULTS FOR 2017-2018			
QUARTER	NEW CLUB GOAL	NEW CLUBS	DROPPED CLUBS
JULY/AUG/SEPT	0	0	0
OCT/NOV/DEC	1	0	0
JAN/FEB/MAR	0	0	0
APR/MAY/JUNE	0	0	0

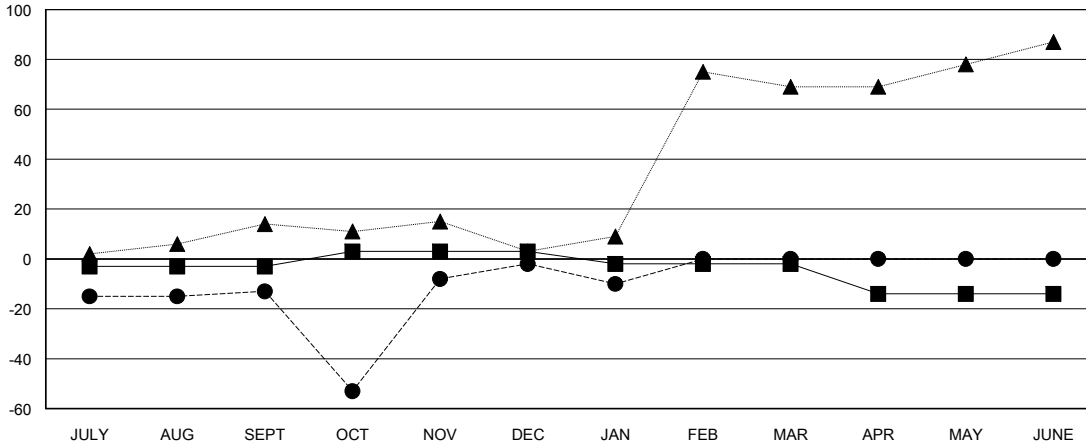
Members			
RESULTS FOR 2017-2018			
QUARTER	MEMBER GROWTH NET GOAL	MEMBER GROWTH ACTUAL	DROPPED MEMBERS ACTUAL (including transfers)
JULY/AUG/SEPT	-3	10	21
OCT/NOV/DEC	6	73	61
JAN/FEB/MAR	-5	6	13
APR/MAY/JUNE	-12	0	0

GOALS AND ACTUAL NEW CLUBS CUMULATIVE



- - CURRENT YEAR GOALS FOR NEW CLUBS
- - CURRENT YEAR ACTUAL NEW CLUBS
- ▲ - LAST YEAR ACTUAL NEW CLUBS

GOALS AND ACTUAL MEMBERS CUMULATIVE



- - MEMBER GROWTH NET GOAL
- - MEMBER GROWTH ACTUAL
- ▲ - LAST YEAR MEMBERSHIP ACTUAL

DROPPED CLUBS: 0	18 CLUBS OF 39 ADDED 1 OR MORE NEW MEMBERS	<u>GENDER DISTRIBUTION</u>
		MALE 704 (67.30%)
		FEMALE 342 (32.70%)
		Women Percentage Fiscal Year Goal: 20%
<u>DROPPED MEMBERS</u>	<a href="#">CLICK HERE FOR CUMULATIVE MEMBERSHIP DATA</a>	TOTAL FAMILY UNIT MEMBERS 202
DECEASED 6		FAMILY MEMBERS PAYING HALF DUES 103
CLUB CANCELLED 0		
OTHER 89		
TOTAL 95		